

State of Wyoming Corner Record

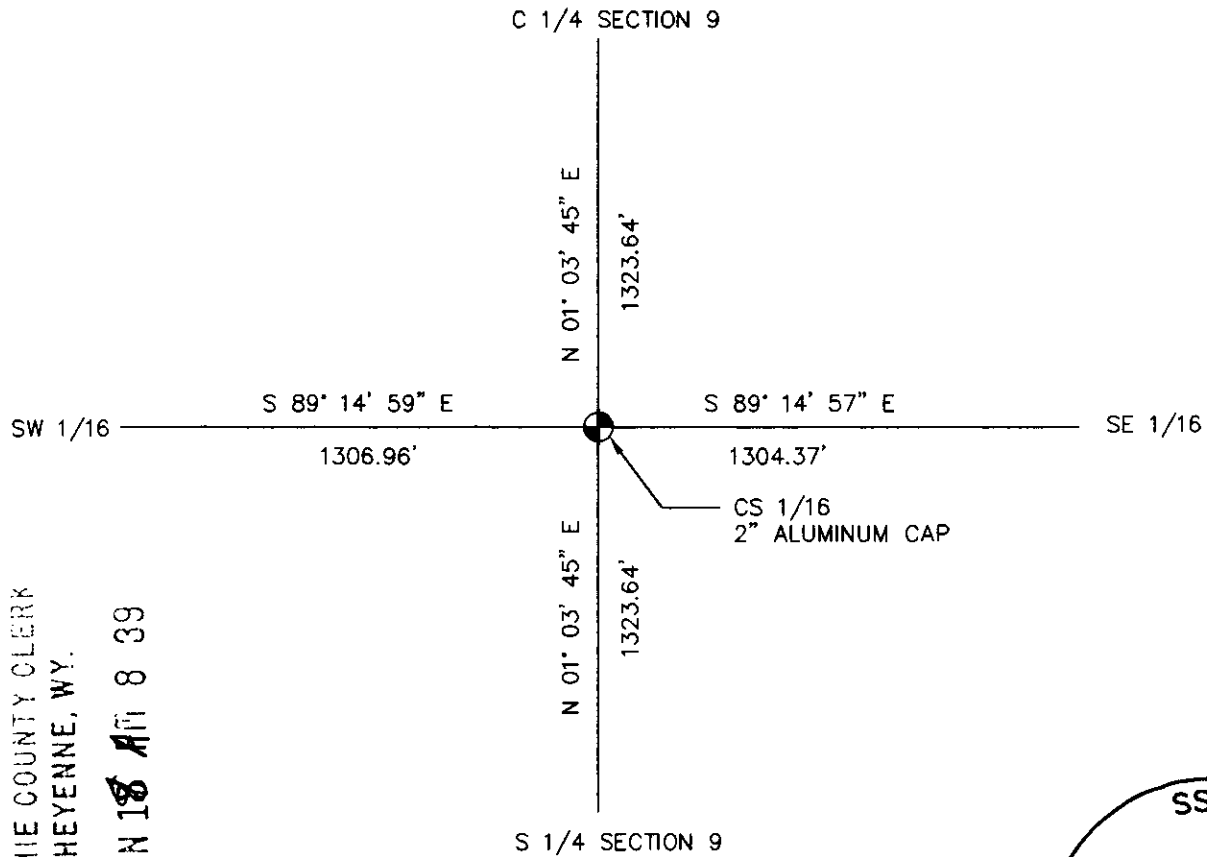
(in compliance with the CORNER PERPETUATION AND FILING ACT, Wyoming Statutes, 1977, Section 36-11-101, et. seq., and the Rules and Regulations of the Board of Registration for Professional Engineers and Professional Land Surveyors)

Reverse side of this form may be used if more space is needed.

Record of original survey and citation of source of historical information (if corner is lost or obliterated). Description of corner monumentation evidence found and/or monument and accessories established to perpetuate the location of this corner. Sketch of relative location of monument, accessories, and reference points with course and distance to adjacent corner(s) (if determined in this survey). Method and rationale for reestablishment of lost or obliterated corner.

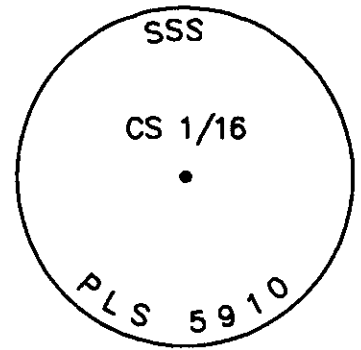
MONUMENT FOUND: NONE

MONUMENT SET: SET 5/8" X 24" REBAR WITH 2" ALUMINUM CAP, STAMPED AS SHOWN BELOW.



175600

LARAMIE COUNTY CLERK
CHEYENNE, WY.
'96 JAN 18 AM 8 39



THIS FORM REPLACES PREVIOUS SUBMISSIONS
ALSO SEE RECORD OF SURVEY OF "CAMPSTOOL RANCHETTETS"

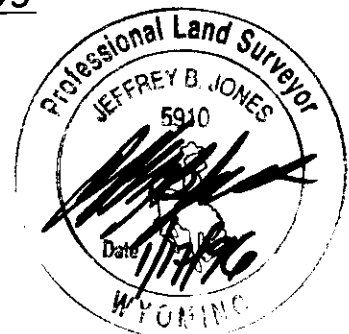
Date of Field Work: 12-12-94 Office Reference: 94222

CROSS INDEX DIAGRAM

A	1	2	3	4	5	6	7	8	9	10	11	12	13	14	15	16	17	18	19	20	21	22	23	24	25
B																									
C	6																								
D		5																							
E			4																						
F				3																					
G					2																				
H						1																			
I																									
J	7																								
K		8																							
L			9																						
M				10																					
N					11																				
O						12																			
P							13																		
Q								14																	
R									15																
S										16															
T											17														
U												18													
V													19												
W														20											
X															21										
Y																22									
Z																	23								
																		24							
																			25						

Firm/Agency, Address
STEIL SURVEYING SERVICES, LLC
1102 WEST 19th STREET
CHEYENNE WY 82001
Telephone Number: **(307) 634-7273**

This corner record was prepared by me or under my direction and supervision.
SEAL & SIGNATURE



BOOK 14 15

Corner Name: CS 1/16 Section: 9 T 13N R 64W ; 6th P.M. Cross-Index No.: H-11
SBRPEPLS/PLSW: March 1994

0950